

No one does it
like *you*

Canon

BUILT ON AWARD-WINNING SUCCESS.

The imageRUNNER ADVANCE DX C5700i Series platform brings you customisable workflows to help you increase productivity and track your progress.



Canon imageRUNNER ADVANCE DX C5700i Series



Colour Multifunction Device



MOBILITY

An increasing mobile workforce requires an innovative way of working

- Simple and easy mobile connectivity with in-built Wi-Fi.
- Flexible mobile workflows enable users to intuitively print, scan and capture directly on their mobile with Canon PRINT Business.
- Support for Apple AirPrint®, Mopria™ and Google Cloud™.



SECURITY

Safeguard data and ensure sensitive information remains secure

- The device boot process, firmware, and applications are verified upon start up. In conjunction with McAfee Embedded Control™ which utilises a whitelist to protect against malware, the device is protected from tampering or alterations of firmware and applications.
- Security Information and Event Management (SIEM) system integration helps provide real-time insights into potential threats to the network and printers.
- Ensure data is secure with HDD encryption.



INTEGRATION

Seamlessly integrate into new and existing systems

- Leverage Canon's MEAP platform to optimise processes integrating with a range of powerful document, capture and output management solutions.
- Access and store your cloud documents at any time using uniFLOW Online.
- Supports integration with popular cloud services like Google Drive and Box*.



PERFORMANCE

Save time and resources with increased workflow productivity

- Intuitive, user-friendly interface with a large 10.1 inch WSVGA touchscreen and smartphone similarities.
- Advanced scanning technology can dramatically reduce time spent naming and saving scanned files to your cloud storage service*.
- Single-pass document feeder and automatic blank page removal for streamlined digital workflows.
- Hot Folders allow users to drag and drop a file into a hot folder and automatically print with pre-defined settings such as number of copies and finishing requirements.
- Scan and convert documents to searchable digital files in a variety of file formats.



SUSTAINABILITY

Achieve environmental goals by incorporating responsible design and efficient operations

- Motion Sensor and Sleep Recovery Triggers reduce energy consumption.
- Minimise waste with default print settings including 2-sided, and black and white options.
- A combination of fusing technologies and low-melting-point toner minimises power requirements and helps achieve low energy consumption.



COST CONTROL

Manage costs with ease thanks to improved efficiencies

- Reduce wastage with Forced Job Hold at the device allowing users to preview, change print settings and sample print before releasing the full job.
- Manage print by applying print policies and monitoring output.
- Control print costs by restricting access not only to the device but to functions by user such as colour and 1-sided printing.
- Reduce downtime and use of IT resources with remote support and fleet management.

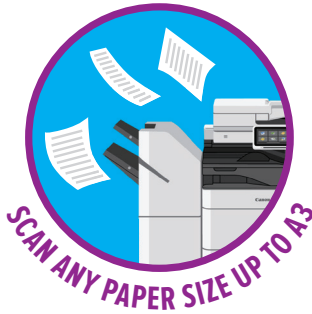
* Requires uniFLOW Online Express, Online or Cloud Image Processing subscription.

ADVANCED SCANNING

uniFLOW Online's Filing Assist* saves you time, reduces keying errors and brings consistency to your filing so you can find what you need, when you need it, anywhere you have internet access; at home, work or on the go.

Filing Assist uses pre-configured workflows that scan batches of repetitive documents including invoices, delivery notes, picking lists and orders to popular cloud services. Not only are they scanned, they are named, converted and filed based on rules and information from the document.

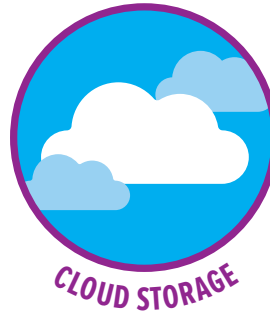
Fast scanning and auto-recognition of documents



File and name documents by type or even text content



Store to directory paths in popular cloud services

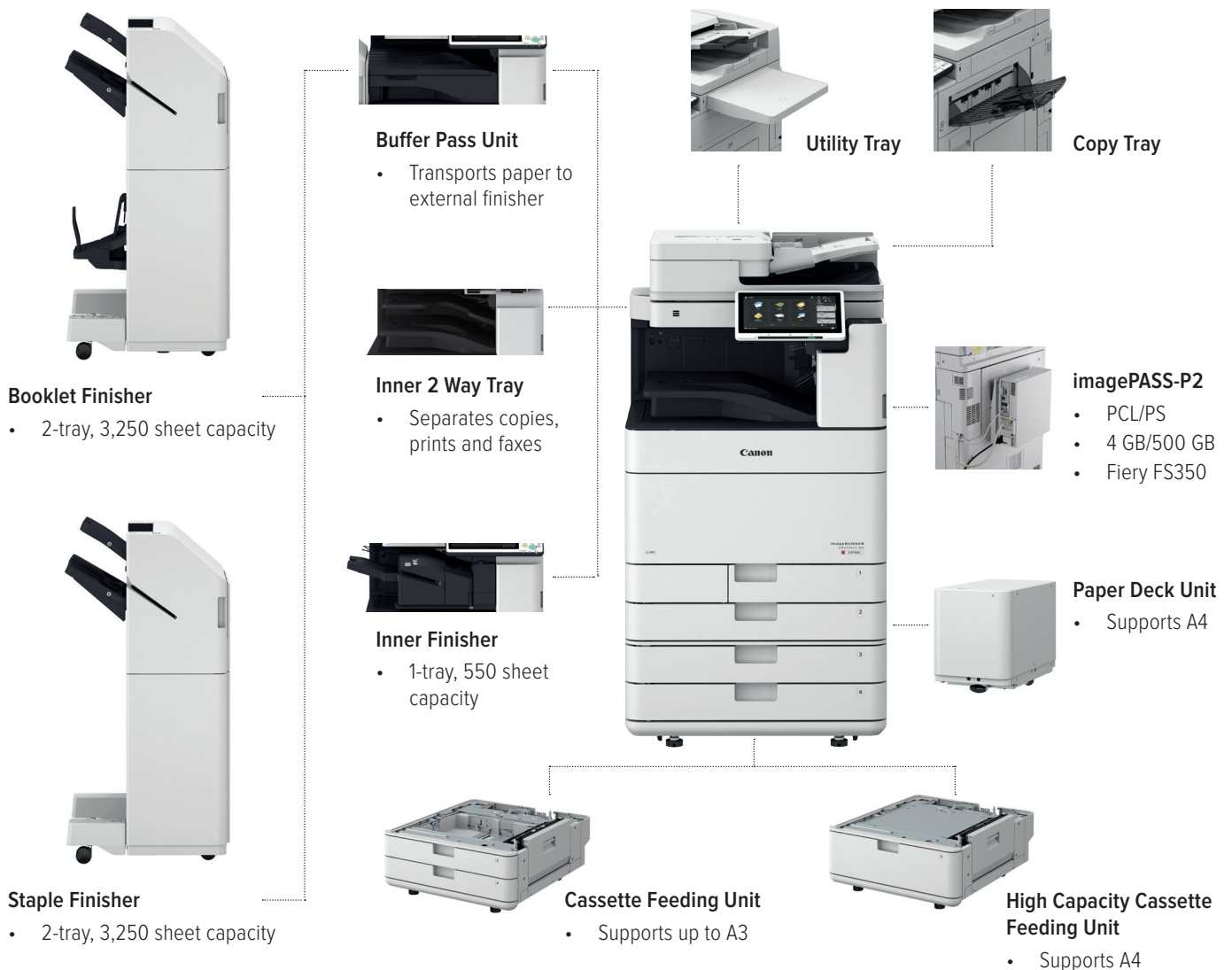


Access files anytime, anywhere from any device



* Filing Assist is available with uniFLOW Online 2020.2 and requires a Cloud Image Processing subscription.

CONFIGURATION



imageRUNNER ADVANCE DX C5700i SERIES SPECIFICATIONS

Main Unit

Machine Type	A3 Colour Laser Multifunctional
Core Function	Print, Copy, Scan, Send, Store and Optional Fax
Processor	175 GHz Dual Core Processor
Control Panel	10.1" TFT LCD WSVGA Colour Touch Panel
Memory	Standard: 4.0 GB RAM
Hard Disk Drive	Standard*: 320 GB (available disk space: 250 GB) Optional: 250 GB, 1 TB * A different initial HDD may be used.
Mirroring Hard Disk Drive	Optional
Interface Connection	Network: Standard: 100Base-T/100Base-TX/10Base-T, Wireless LAN (IEEE 802.11 b/g/n); Optional: NFC, Bluetooth Low Energy Others: Standard: USB 2.0 (Host) x 1, USB 3.0 (Host) x 1, USB 2.0 (Device) x 1; Optional: Serial Interface, Copy Control Interface

Paper Supply Capacity (A4, 80 gsm)	Standard: 1,200 Sheets 100-sheet Multi-purpose Tray x 1 550-sheet Cassettes x 2 Maximum: 6,350 sheets (with High Capacity Cassette Feeding Unit-A1 and Paper Deck Unit-F1)
Paper Output Capacity (A4, 80gsm)	Standard: 250 Sheets Maximum: 3,450 Sheets (with Staple Finisher-Y1 or Booklet Finisher-Y1 and Copy Tray-J2)

Finishing Capabilities	Standard: Collate, Group With Options: Collate, Group, Offset, Staple, Saddle Stitch, Hole Punch, Eco Staple, Staple On-demand
------------------------	-----------------------------------------------------------------------------------------------------------------------------------

Supported Media Types	Multi-purpose Tray: Thin, Plain, Recycled, Colour, Heavy, Coated, Tracing, Bond, Transparency, Label, Pre-punched, Letterhead, Tab, Envelope Paper Cassette (Upper/Lower): Thin, Plain, Recycled, Colour, Heavy, Bond, Transparency, Pre-punched, Letterhead, Envelope* * Envelope Feeder Attachment (standard) is required.
-----------------------	------------------------------------------------------------------------------------------------------------------------------------------------------------------------------------------------------------------------------------------------------------------------------------------------------------------------------------------

Supported Media Sizes	Multi-purpose Tray: Standard Size: SRA3, A3, A4, A4R, A5, A5R, A6R, B4, B5, B5R Custom Size: 98.0 x 139.7 mm to 320.0 x 457.2 mm Free Size: 98.0 x 139.7 mm to 320.0 x 457.2 mm Envelopes: COM 10 No.10, Monarch, DL, ISO-C5 Envelope Custom Size: 98.0 x 98.4 mm to 320.0 x 457.2 mm Upper Cassette: Standard Size: A4, A5, A5R, A6R, B5 Custom Size: 98.0 x 148.0 mm to 297.0 x 215.9 mm Envelopes: COM10 No.10, DL, ISO-C5 Lower Cassette: Standard Size: A3, A4, A4R, A5, A5R, A6R, B4, B5, B5R Custom Size: 98.0 x 182.0 mm to 304.8 x 457.2 mm Envelopes: COM10 No.10, Monarch, DL, ISO-C5
-----------------------	-----------------------------------------------------------------------------------------------------------------------------------------------------------------------------------------------------------------------------------------------------------------------------------------------------------------------------------------------------------------------------------------------------------------------------------------------------------------------------------------------------------------------------------------------------------------------------------------------------------------------------------------

Supported Media Weights	Multi-purpose Tray: 52 to 300 gsm Paper Cassette (Upper/Lower): 52 to 256 gsm Duplex: 52 to 220 gsm
-------------------------	-----------------------------------------------------------------------------------------------------------

Warm-up Time	Quick Startup Mode: 4 Seconds or less * * Time from device power-on to when the copy icon appears and is enabled to operate on the touch panel display. From Sleep Mode: 10 Seconds or less From Power On: 10 Seconds or less * * Time from device power-on, until copy ready (not print reservation).
--------------	--------------------------------------------------------------------------------------------------------------------------------------------------------------------------------------------------------------------------------------------------------------------------------------------------------------------

Dimensions (W x D x H)	620 x 722 x 937 mm
Installation Space (W x D)	Basic: 1,083 x 1162 mm (Right Cover Open with Multi-purpose Tray Extended + Cassette Drawers Open) Fully Configured: 1,866 x 1162 mm (Booklet Finisher-Y1 with the Extension Tray Extended + Paper Deck Unit-F1 + Cassette Drawers Open)

Weight	Approx. 142 kg Including Toner
--------	--------------------------------

Print Specifications

Print Speed (BW and CL)	IR-ADV DX C5760i: Up to 60 ppm (A4, A5, A5R, A6R), Up to 32 ppm (A3), Up to 36 ppm (A4R) IR-ADV DX C5750i: Up to 50 ppm (A4, A5, A5R, A6R), Up to 27 ppm (A3), Up to 30 ppm (A4R) IR-ADV DX C5740i: Up to 40 ppm (A4, A5, A5R, A6R), Up to 22 ppm (A3), Up to 24 ppm (A4R) IR-ADV DX C5735i: Up to 35 ppm (A4, A5, A5R, A6R), Up to 18 ppm (A3), Up to 23 ppm (A4R)
-------------------------	------------------------------------------------------------------------------------------------------------------------------------------------------------------------------------------------------------------------------------------------------------------------------------------------------------------------------------------------------------------------------

Print Resolution (dpi)	1,200 x 1,200
------------------------	---------------

Page Description Languages	Standard: UFR II, PCL6 Optional: Adobe® PostScript® 3™
----------------------------	-----------------------------------------------------------

Direct Print	Supported File Types: PDF, EPS, TIFF/JPEG, and XPS
Printing from Mobile and Cloud	AirPrint®, Mopria™, Google Cloud Print™, Canon Business PRINT, and uniFLOW Online. A range of software and MEAP-based solutions are available to provide printing from mobile devices or internet-connected devices and cloud-based services depending on your requirements. Please contact your sales representative for further information.

Fonts	PS fonts: 136 Roman PCL fonts: 93 Roman, 10 Bitmap fonts, 2 OCR fonts, Andalé Mono WT J/K/S/T ¹ (Japanese, Korean, Simplified and Traditional Chinese), Barcode fonts ² *1 Optional PCL International Font Set-A1 is required. *2 Optional Barcode Printing Kit-D1 is required.
-------	----------------------------------------------------------------------------------------------------------------------------------------------------------------------------------------------------------------------------------------------------------------------------------------------------------------

Print Features	Secured Print, Secure Watermark, Header/Footer, Page Layout, Two-sided Printing, Mixed Paper Sizes/Orientations, Front/Back Covers, Toner Reduction, Poster Printing, Forced Hold Printing, Print Date, Scheduled Printing, Printing Using a Virtual Printer
----------------	--------------------------------------------------------------------------------------------------------------------------------------------------------------------------------------------------------------------------------------------------------------

Operating System	UFR II: Windows® 7/8.1/10/Server 2008/Server 2008 R2/Server 2012/Server 2012 R2/Server 2016/Server 2019, Mac OS X (10.10 or later)
As of Feb. 2020	PCL: Windows® 7/8.1/10/Server 2008/Server 2008 R2/Server 2012/Server 2012 R2/Server 2016/Server 2019 PS: Windows® 7/8.1/10/Server 2008/Server 2008 R2/Server 2012/Server 2012 R2/Server 2016/Server 2019, Mac OS X (10.10 or later) PPD: Windows® 7/8.1/10, Mac OS X (10.9 or later)

Copy Specifications

Copy Speed (BW and CL)	IR-ADV DX C5760i: Up to 60 ppm (A4, A5, A5R, A6R), Up to 32 ppm (A3), Up to 36 ppm (A4R) IR-ADV DX C5750i: Up to 50 ppm (A4, A5, A5R, A6R), Up to 27 ppm (A3), Up to 30 ppm (A4R) IR-ADV DX C5740i: Up to 40 ppm (A4, A5, A5R, A6R), Up to 22 ppm (A3), Up to 24 ppm (A4R) IR-ADV DX C5735i: Up to 35 ppm (A4, A5, A5R, A6R), Up to 18 ppm (A3), Up to 23 ppm (A4R)
------------------------	------------------------------------------------------------------------------------------------------------------------------------------------------------------------------------------------------------------------------------------------------------------------------------------------------------------------------------------------------------------------------

First-Copy-Out Time (A4, BW/CL)	IR-ADV DX C5760i: Approx. 2.9/4.5 seconds or less IR-ADV DX C5750i: Approx. 3.5/5.2 seconds or less IR-ADV DX C5740i: Approx. 4.1/6.1 seconds or less IR-ADV DX C5735i: Approx. 4.9/7.4 seconds or less
---------------------------------	------------------------------------------------------------------------------------------------------------------------------------------------------------------------------------------------------------------

Copy Resolution (dpi)	600 x 600
-----------------------	-----------

Multiple Copies	Up to 999 copies
-----------------	------------------

Copy Density	Automatic or Manual (9 Levels)
--------------	--------------------------------

Magnification	Variable Zoom: 25% to 400% (1% Increments) Preset Reduction/Enlargement: 25%, 50%, 61%, 70%, 81%, 86%, 100% (1:1), 115%, 122%, 141%, 200%, 400%
Copy Features	Preset R/E Ratios by Area, Two-sided, Density Adjustment, Original Type Selection, Interrupt Mode, Book to Two Pages, Two-sided Original, Job Build, N on 1, Add Cover, Insert Sheets, Different Size Originals, Page Numbering, Copy Set Numbering, Sharpness, Erase Frame, Secure Watermark, Print Date, Gutter, Print & Check, Negative/Positive, Repeat Images, Merge Job Blocks, Mirror Image, Store in Mail Box, Superimpose Image, Copy ID Card, Skip Blank Pages, Free Size Original, Colour Mode, Reserved Copy, Copy Sample

Scan Specification

Type	Single-pass Duplexing Automatic Document Feeder* (2-sided to 2-sided (Automatic)) * Detect Feeder Multi Sheet Feed is supported.
Document Feeder	Up to 200 Sheets
Paper Capacity (80 gsm)	

Acceptable Originals and Weights	Platen: Sheet, Book, and 3-Dimensional Objects Document Feeder Media Weight: 1-sided Scanning: 38 to 220 gsm (BW, CL) 2-sided Scanning: 38 to 220 gsm (BW, CL) An acceptable weight of A6R or smaller is 50 to 220gsm.
Supported Media Sizes	Platen Scanning Size: Up to 297.0 x 431.8 mm Document Feeder Media Size: A3, A4, A4R, A5, A5R, A6R, B4, B5, B5R, B6R Custom Size: 70.0 x 139.7 mm to 304.8 x 431.8 mm
Scan Speed (ipm, BW/CL, A4)	1-sided Scanning: 135/135 (300 x 300 dpi, Send), 80/80 (600 x 600 dpi, Copy) 2-sided Scanning: 270/270 (300 x 300 dpi, Send), 160/90 (600 x 600 dpi, Copy)
Scan Resolution (dpi)	Scan for Copy: 600 x 600 Scan for Send: (Push) 600 x 600 (SMB/FTP/WebDAV/IFAX), (Pull) 600 x 600 Scan for Fax: 600 x 600
Pull Scan Specifications As of Feb. 2020	Colour Network ScanGear2. For both TWAIN and WIA Supported OS: Windows® 7/8.1/10/Server 2008/Server 2008 R2/Server 2012/Server 2012 R2/Server 2016
Scan Method	Push Scan, Pull Scan, Scan to Box, Scan to Advanced Box, Scan to Network, Scan to USB Memory Key, Scan to Mobile Devices, Scan to Cloud (uniFLOW Online)

Send Specifications

Destination	Standard: E-mail/Internet FAX (SMTP), SMB3.0, FTP, WebDAV, Mail Box Optional: Super G3 FAX, IP Fax
Address Book	LDAP (2,000)/Local (1,600)/Speed Dial (200)
Send Resolution (dpi)	Push: Up to 600 x 600 Pull: Up to 600 x 600
Communication Protocol	File: FTP (TCP/IP), SMB3.0 (TCP/IP), WebDAV E-mail/Fax: SMTP, POP3
File Format	Standard: TIFF, JPEG, PDF (Limited Colour, Compact, Searchable, Apply Policy, Optimise for Web, PDF/A-1b, Trace & Smooth, Encrypted, Device Signature, User Signature), XPS (Compact, Searchable, Device Signature, User Signature), Office Open XML (PowerPoint, Word)
Universal Send Features	Original Type Selection, Two-sided Original, Book to Two Pages, Different-size Originals, Density Adjustment, Sharpness, Copy Ratio, Erase Frame, Job Build, Delayed Send, Preview, Job Done Notice, File Name, Subject/Message, Reply-to, E-mail Priority, TX Report, Original Content Orientation, Skip Blank Pages

Fax Specifications

Maximum Number of Connection Lines	4
Modem Speed	Super G3: 33.6 kbps G3: 14.4 kbps
Compression Method	MH, MR, MMR, JBIG
Resolution (dpi)	400 x 400 (Ultra Fine), 200 x 400 (Super Fine), 200 x 200 (Fine), 200 x 100 (Normal)
Sending/Receiving Size	Sending: A3, A4, A4R, A5*, A5R*, B4, B5*, B5R* Receiving: A3, B4, A4, A4R, A5R, B5, B5R *1 Sent as A4 *2 Sent as B4 short
FAX Memory	Up to 30,000 Pages (2,000 Jobs)
Speed Dials	Max. 200
Group Dials/Destinations	Max. 199 Dials
Sequential Broadcast	Max. 256 Addresses
Memory Backup	Yes
Fax Features	Sender's Name (TTI), Selecting the Telephone Line (when sending fax), Direct Send, Delayed Send, Preview, Job Done Notice, TX Report, Interrupt Transmission, Sequential Broadcasting, Password/Subaddress Sending, Confidential Mailbox, 2 on 1 Log

Store Specifications

Mail Box (Number Supported)	100 User Inboxes, 1 Memory RX Inbox, 50 Confidential Fax Inboxes Maximum 10,000 Pages (2,000 Jobs) Stored
Advanced Box	Communication Protocol: SMB or WebDAV Supported Client PC: Windows® 8.1/10 Concurrent Connections (Max.): SMB: 64, WebDAV: 3
Advanced Box Available Disc Space	Standard: 16 GB (With Option: Max. 480 GB)
Advanced Box Features	Authentication for Advanced Box Log-in, Sort Function, Printing a PDF File with a Password, imageWARE Secure Audit Manager Support, Search, File Preview, Authentication Management, Open to Public, URI TX, Backup/Restore

Security Specifications

Authentication and Access Control	User Authentication (Picture Login, Picture and PIN Login, Card Login, Username and Password Login, Function Level Login, Mobile Login), Department ID Authentication (Department ID and PIN Login, Function Level Login), uniFLOW Online Express (PIN Login, Picture Login, Picture and PIN Login, Card Login, Card and PIN Login, Username and Password Login, Department ID and PIN Login, Function Level Login), Access Management System (Access Control)
Document Security	Print Security (Secure Print, Encrypted Secure Print, Forced Hold Printing, uniFLOW Secure Print™), Receive Data Security (Confidential Fax Inbox Forwarding Received Documents Automatically), Scan Security (Encrypted PDF, Device Signature PDF/XPS, User Signature PDF/XPS, Adobe LiveCycle® Rights Management ES2.5 Integration), BOX Security (Mail Box Password Protected, Advanced Box Access Control), Send Data Security (Setting for requesting password input per transmission, Restricted E-mail/File Send Functions, Confirming FAX Number, Allow/Restrict Fax Driver Transmissions, Allow/Restrict Sending from History, S/MIME Support), Document Tracking (Secure Watermark) *1 Requires uniFLOW Online/uniFLOW
Network Security	TLS 1.3, IPsec, IEEE802.1X Authentication, SNMP V3.0, Firewall Functionality (IP/MAC Address Filtering), Dual Network Support (Wired LAN/Wireless LAN, Wired LAN/Wired LAN), Disabling Unused Functions (Enabling/Disabling Protocols/Applications, Enabling/Disabling Remote UI, Enabling/Disabling USB Interface), G3 FAX Separation from LAN, USB Port Separation from LAN, Prohibit the Execution of Files Stored in Advanced Box in the MFP, Scan and Send Virus Concerns for E-mail Reception
Device Security	Protecting HDD Data (HDD Data Encryption (FIPS140-2 Validated), HDD Data Overwrite Erase, HDD Lock), Standard HDD Initialisation, Trusted Platform Module (TPM), Job Log Conceal Function, Protecting MFD Software Integrity, Checking MFD Software Integrity (Verify System at Startup, Runtime Intrusion Detection)
Device Management and Auditing	Administrator Password, Digital Certificate And Key Management, Audit Log, Cooperating with External Security Audit System (Security Information and Event Management), Image Data Logging, Security Policy Setting

Environmental Specifications

Operating Environment	Temperature: 10 to 30 °C Humidity: 20 to 80 % RH (Relative Humidity)
Power Source	220~240 V, 50/60 Hz, 6 A
Power Consumption	Maximum: Approx. 1,800 W Standby: Approx. 62.4 W* Sleep Mode: Approx. 0.8 W* *1 Reference Value: Measured one unit *2 0.8 W is not available in all circumstances due to certain settings.

Consumables

Toner Cartridges	NPG-71 Toner BK/C/M/Y NPG-71L Toner BK/C/M/Y
Toner (Estimated Yield @ 5% Coverage)	NPG-71 Toner BK 69,000 Pages NPG-71 Toner C/M/Y 60,000 Pages NPG-71L Toner C/M/Y 26,000 Pages

Software and Printer Management

Tracking and Reporting	Universal Login Manager (ULM) uniFLOW Online Express
Remote Management Tools	eMaintenance Content Delivery System
Scanning Software	Network ScanGear
Optimisation Tools	Canon Driver Configuration Tool
Platform	MEAP (Multifunctional Embedded Application Platform)

Fiery Print Controller Specifications (Embedded)

Optional/Standard	Optional on all models
Name	imagePASS-P2 V1.1 (Embedded)
Print Resolution (dpi)	1200 x 1200, 600 x 600
Page Description Language(s)	Adobe PS3, PCL6
Memory	4GB (1 x 4 GB)
Hard Disk Drive	500 GB SATA
Processor Speed	Intel Pentium G4400 (3.3 GHz)
System	FS350
Fonts	PS: 138 Fonts PCL: 113 Fonts
Supported Operating Systems	Windows® 7 32 bit* and 64 bit/Windows 8.1 32 bit* and 64 bit/Windows 10 32 bit* and 64 bit/Windows Server 2008 R2 64 bit/Windows Server 2012 64 bit*/Windows Server 2012 R2 64 bit/Windows Server 2016 64 bit/Windows Server 2019 64 bit/MAC OS (10.11, 10.12, 10.13, 10.14, 10.15) *1 Windows 7, 8.1, 10 32 bit and Server 2012 are supported by printer driver only.
Interface	2 x Ethernet (1000Base-T/100Base-TX/10Base-T), USB 3.0 x 2 (Rear), USB 2.0 x 4 (Rear)
Network Protocols	TCP/IP (FTP, SMTP, POP, HTTP, SNMP, LDAP, SLP, SMB, LPD, IPP, WS-Discovery, Bonjour, Direct Mobile Printing, Port9100, SNTPT, 802.1X, DHCP, DNS, NTP)
Direct Print	PDF 1.7, EPS, TIFF 6, JDF 1.4/JMF (OP)
VDP	FreeForm v1, v2.1
Fiery Print Controller Standard Features	Fiery Command WorkStation 6/Paper Catalog/Fiery Spot-on/Fiery Remote Scan
Fiery Print Controller Options	Fiery Impose/Fiery Compose/Fiery Impose and Compose/Productivity Package Web Activate (Include Fiery JDF)/Fiery Hot Folders & Virtual Printers
HW Platform	E400
Base OS	Debian of Linux
Power Source	AC 100–240 V, 50 Hz/60 Hz, 3.0 A (100V)–1.3 A (240 V)
Maximum Power Consumption	47 W
Dimensions (W x D x H)	285 x 93 x 295 mm
Weight	Fiery Unit Only (with plate): Approx. 5 kg

Paper Supply Options

Cassette Feeding Unit-AM1	Paper Capacity: 2 x 550 Sheets (80 gsm) Paper Type: Thin, Plain, Recycled, Colour, Heavy, Bond, Transparency, Pre-punched, Letterhead Paper Size: A3, A4, A4R, A5, A5R, A6R, B4, B5, B5R Custom Size: 98.0 x 182.0 mm to 304.8 x 457.2 mm Paper Weight: 52 to 256 gsm Power Source: From the Main Unit Dimensions (W x D x H): 620 x 700 x 251 mm (attached to the main unit) Weight: Approx. 22.5 kg
High Capacity Cassette Feeding Unit-A1	Paper Capacity: 2,450 Sheets (80 gsm) Paper Type: Thin, Plain, Recycled, Colour, Heavy, Bond, Pre-punched, Letterhead Paper Size: A4 Paper Weight: 52 to 256 gsm Power Source: From the Main Unit Dimensions (W x D x H): 620 x 700 x 251 mm (attached to the main unit) Weight: Approx. 30.0 kg
Paper Deck Unit-F1	Paper Capacity: 2,700 Sheets (80 gsm) Paper Type: Thin, Plain, Colour, Recycled, Heavy, Pre-punched Paper Size: A4, B5 Paper Weight: 52 to 256 gsm Power Source: From the Main Unit Dimensions (W x D x H): 344 x 630 x 440 mm (attached to the main unit) Weight: Approx. 31 kg

Output Options*

Inner 2way Tray-J1	* Paper capacity may vary with different paper type/size. Tray Capacity (with 80 gsm paper, 1-sided): Upper Tray: A4, A5, A5R, A6R, B5: 100 Sheets SRA3, A3, A4R, B4: Up to 50 sheets Lower Tray (standard tray): A4, A5, A5R, A6R, B5: Up to 250 Sheets SRA3, A3, A4R, B4: Up to 100 sheets Paper Weight: 52 to 300 gsm Dimensions (W x D x H): 420 x 407 x 76 mm Weight: Approx. 0.7 kg
Copy Tray-J2	Capacity (with 80 gsm paper, 1-sided): A4, A5, A5R, A6R, B5: 100 Sheets SRA3, A3, A4R, B4, B5R: 75 Sheets Dimensions (W x D x H): 442 x 373 x 176 mm (attached to the main unit, when the extension tray is extended) Weight: 0.5 kg
Inner Finisher-H1	Tray Capacity (with 80 gsm paper): Upper Tray: SRA3, A3, A4, A4R, A5, A5R, A6R, B4, B5, B5R: 45 Sheets Lower Tray: A4, A5, A5R, B5: 500 Sheets, SRA3, A3, A4R, B4, B5R: 250 Sheets, A6R: 30 Sheets (64 to 300 gsm) Envelope: 10 Sheets Paper Weight: 52 to 300 gsm Staple Position: Corner, Double Staple Capacity: Corner and Double Stapling: A4, B5: 50 Sheets (52 to 90 gsm) A3, A4R, B4: 30 Sheets (52 to 90 gsm) Eco Staple: A3, A4, B4, B5: 5 Sheets (52 to 64 gsm) 4 sheets (65 to 81.4 gsm) 3 sheets (82 to 105 gsm) Staple On-demand: 40 Sheets (80 gsm) Power Supply: From the Main Unit Dimensions (W x D x H): 585 x 525 x 225 mm (when the extension tray is extended) Weight: Approx. 8.6 kg

Staple Finisher-Y1	(Requires Buffer Pass Unit-L1) Tray Capacity (with 80 gsm paper): Upper Tray: A4, A5, A5R, A6R, B5: 250 Sheets, SRA3, A3, A4R, B4, B5R: 125 Sheets Lower Tray: A4, A5, A5R, B5: 3,000 Sheets, SRA3, A3, A4R, B4, B5R: 1,500 Sheets, A6R: 250 Sheets Envelopes: Monarch: 30 Sheets, COM10 No.10, DL, ISO-C5: 100 Sheets Paper Weight: Upper Tray: 52 to 256 gsm, Lower Tray: 52 to 300 gsm Staple Position: Corner, Double Staple Capacity: A4, B5: 50 Sheets (52 to 90 gsm) A3, A4R, B4: 30 Sheets (52 to 90 gsm) Eco Staple: A3, A4: 5 Sheets (52 to 64 gsm) 4 Sheets (65 to 81.4 gsm) 3 Sheets (82 to 105 gsm) Staple On-demand: 50 sheets (52 to 90 gsm) Power Source: From the Main Unit Dimensions (W x D x H): 637 x 623 x 1,142 mm (when the extension tray is extended) Weight: Approx. 31 kg
Booklet Finisher-Y1	(Requires Buffer Pass Unit-L1) (Includes the above Staple Finisher-Y1 basic staple specifications.) Saddle Stitch Paper Size: A3, A4R, B4, Custom Size (195.0 x 270.0 mm to 304.8 x 457.2 mm) Saddle Stitch Staple Capacity: 20 Sheets x 10 Sets (52 to 81.4 gsm) (including 1 Cover Sheet 52 to 256 gsm) 4 Sheets (65 to 81.4 gsm) Non Staple Folded Bunch Capacity: Up to 3 Sheets (52 to 105 gsm) Power Supply: From the Main Unit Dimensions (W x D x H): 637 x 623 x 1,142 mm (when the extension tray is extended) Weight: Approx. 57 kg
Inner 2/3 Hole Puncher-B1	(Requires the Inner Finisher-H1) Two or Three Holes Acceptable Punch Paper Weight: 52 to 300 gsm Acceptable Punch Paper Size: Two Holes: A3, A4, A4R, A5, B4, B5, B5R Three Holes: A3, A4, B4, B5 Power Source: From the Finisher
Inner 2/4 Hole Puncher-B1	(Requires the Inner Finisher-H1) Two or Four Holes Acceptable Punch Paper Weight: 52 to 300 gsm Acceptable Punch Paper Size: Two Holes: A3, A4, A4R, A5, B4, B5, B5R Four Holes: A3, A4 Power Source: From the Finisher
2/3 Hole Puncher Unit-A1	(Requires either the Staple Finisher-Y1 or Booklet Finisher-Y1) Two or Three Holes Acceptable Punch Paper Weight: 52 to 300 gsm Acceptable Punch Paper Size: Two Holes: A3, A4, A4R, A5, B4, B5, B5R Three Holes: A3, A4, B4, B5 Power Source: From the Finisher
2/4 Hole Puncher Unit-A1	(Requires either the Staple Finisher-Y1 or Booklet Finisher-Y1) Two or Four Holes Acceptable Punch Paper Weight: 52 to 300 gsm Acceptable Punch Paper Size: Two Holes: A3, A4, A4R, A5, B4, B5, B5R Four Holes: A3, A4 Power Source: From the Finisher
Hardware Accessories	
Card Readers	Copy Card Reader-F1
Others	Tab Feeding Attachment-F1, Utility Tray-B1, Buffer Pass Unit-L1, Numeric Keypad-A1
Security Options	
Data Security	HDD Mirroring Kit-J1, 2.5 inch/250 GB HDD-N1, 2.5 inch/1 TB HDD-P1
System and Controller Options	
Print Accessories	PCL International Font Set-A1, PS Printer Kit-BE1
Barcode Printing	Barcode Printing Kit-D1
EFI-Fiery Based Controller (Embedded)	imagePASS-P2 V1.1
EFI-Fiery Based Controller Options (Embedded)	Fiery Impose, Fiery Compose, Fiery Impose and Compose, Productivity Package Web Activate, Hot Folders License
System Accessories	Copy Control Interface Kit-A1, Serial Interface Kit-K3, Connection Kit-A2 for Bluetooth LE, NFC Kit-E1
FAX Accessories	Super G3 FAX Board-AS1, Super G3 2nd Line Fax Board-AS1, Super G3 3rd/4th Line Fax Board-AS1, Remote Fax Kit-A1, IP FAX Expansion Kit-B1
Other Options	
Accessibility Accessories	ADF Access Handle-A1, Voice Guidance Kit-G1, Voice Operation Kit-D1
Staple Cartridge	Staple-P1, Staple Cartridge-Y1

For information and services contact

Canon Australia Pty Ltd	1800 444 199	canon.com.au/business
Canon New Zealand Ltd	0800 222 666	canon.co.nz/business

POWERED BY  **uniFLOW**
online
express

No one does it
like you

Canon